

KeyCarbon™ USB

USB Keylogger

Users Guide

This page is intentionally left blank.

Website

For Frequently Asked Questions, Troubleshooting, or more general information, feel free to visit the manufacturers website at:

<http://www.KeyCarbon.com/>

Warranty Claims

Please do not return devices to the place of purchase. In the event that a device is defective, please browse to:

<http://www.KeyCarbon.com/warranty/>

Instructions are provided for repair/replacement of a defective device. All warranty claims must be submitted in the original anti-static bag with identification sticker in place. Warranty claims which are due to a forgotten password will be charged a \$40 fee for resetting the device to its factory default password. Please note that as the contents of the flash is encrypted, resetting the password will erase the contents of the log.

Terms of Use

All users must agree to the terms described in the “Use Agreement” (located at the end of this guide) before using this device. If you do not agree to the terms described, DO NOT USE THE DEVICE.

Trademarks

Wordpad® is a trademark of Microsoft Corporation.

Microsoft Windows® is a registered trademark of Microsoft Corporation.

KeyCarbon™ is a trademark of BitForensics.

1. Overview

The KeyCarbon USB device records USB keystrokes from any PC or Macintosh computer, from the moment the computer is powered on.

It is compatible with any operating system running on a PC or Macintosh, including Windows® 95, 98, 98SE, 2000, XP, Vista, Linux, BeOS, DOS, or OS/2, Mac OS, and Mac OS X.

This guide covers the following devices available from www.KeyCarbon.com:

- KeyCarbon USB Home (512KB). Product code “KCU401”.
- KeyCarbon USB Corporate (1568KB). Product code “KCU403”.
- KeyCarbon USB Forensic (2048KB); date/time stamping. Product code “KCU405”.
- KeyCarbon USB Home (512KB). Product code: “KCU301”.
- KeyCarbon USB Corporate (1024KB). Product code: “KCU302”.
- KeyCarbon USB Corporate SE (1568KB). Product code: “KCU303”.
- KeyCarbon USB Forensic (2048K); date/time stamps. Product code: “KCU305”.

Note that all products in the KeyCarbon USB range have virtually identical electronics, and operate in a virtually identical manner, regardless of the casing style.

2. Using Device to Record Typing

Installation of the KeyCarbon™ USB is very simple - the device is inserted inline between the USB plug of the keyboard, the USB socket of the computer.

The unit begins recording the electrical signals for the USB keystrokes it sees from the moment it is plugged in.

Once the unit records keystrokes, they are saved permanently to the flash memory inside the device. The log of keystrokes can be viewed on another computer.

Steps to install the unit:

- 1) Unplug the USB keyboard cable from the back of the desktop computer.
- 2) Plug the USB keyboard into the KeyCarbon™ unit.
- 3) Plug the KeyCarbon™ USB unit into the back of the computer, with the keyboard cable still attached. See figure 1 below.

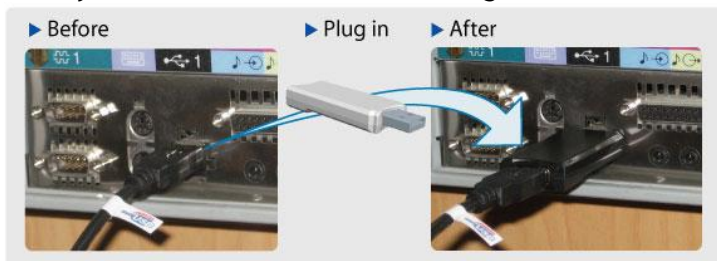


Figure 1 - Installation Diagram

- 4) If you have a wireless keyboard, insert the unit between the USB plug of the wireless transmitter, and the wireless transmitter itself.
- 5) If you only have access to a laptop, then you will need an external keyboard to record keystrokes. Insert the KeyCarbon USB between a spare USB port on the laptop, and the USB plug of the external keyboard. If you are attempting to retrieve the keystrokes using the “virtual keyboard” (chapter 4), you must type the activation password of “phxlog” on the *external* keyboard, not the internal keyboard of the laptop.

3. Viewing The Recorded Typing

There are two methods to download the log of recorded keystrokes.

- Method 1 is using the “Virtual Keyboard” (chapter 4). *This is the recommended method.*
- Method 2 is using the “Windows® Utility” method (chapter 5). *Only use this method if you have already tried method 1.*

Although you can use either method, “Method 1 - Virtual Keyboard” is recommended initially as it is compatible with a wide variety of computers and operating systems.

Log Download Method:	Log Download – “Virtual Keyboard” with Text Editor	Log Download – Windows® Utility
Method of downloading log:	Download log using a standard text editor. No software to install.	Download log using a Windows® utility – the “KeyCarbon™ USB Windows Toolkit”.
Operating system:	Windows® (all versions), Linux (all versions), DOS, BeOS, OS/2, Mac OS (all versions), DOS, Solaris.	Windows® 2000/XP. Does not work in Vista.
Advantages:	Recommended for non-Windows® machines; works in any text editor. Works on any PC with a text editor.	Recommended for Windows® users; log is downloaded very quickly, log can be filtered, multi-language layouts .
Instructions:	See chapter 4.	See chapter 5.

Table 1: Methods for retrieving log of keystrokes from the KeyCarbon™ USB.

4. Viewing Recorded Typing using a “Virtual Keyboard”

Note: This is the recommended method as it is widely compatible with all computers and USB keyboards.

Note: this is one of two separate methods to retrieve the log; for the “Windows Software” method, see chapter 4.

The first step is to install the unit.

The unit is installed differently, depending on whether you have a **desktop**, or a **laptop**.

Step 1. If you have a Desktop ...

This section explains how to plug the unit in, if you have a **desktop**.

- 1) Unplug the USB plug of your keyboard from the back of your computer.
- 2) Plug this keyboard USB plug into the USB socket on the KeyCarbon USB.
- 3) Plug the KeyCarbon USB into the USB socket on the back of the desktop.

The unit is now is now installed correctly on your desktop.

Step 2. If you have a laptop ...

This section explains how to retrieve the log of keystrokes, if you have a **laptop**.

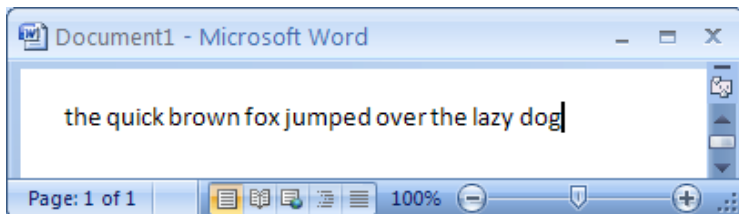
- 1) Find an external USB keyboard.
- 2) Plug the USB plug of the USB keyboard into the KeyCarbon USB.
- 3) Plug the KeyCarbon USB into a spare socket on the side of the laptop.

Note that this unit does **not** work like a USB flash drive. It needs an *external USB keyboard* to activate it, so it will work properly.

The unit is now installed correctly on your laptop.

Step 3. Record some typing ...

Type a sentence. This sentence will be recorded in the units flash memory.



Step 4. Open any text editing program.

- For Windows, Wordpad is recommended. Wordpad comes with all versions of Windows®. Wordpad is available by selecting "Start ... Programs ... Accessories ... Wordpad".
- For Mac OS, SimpleText is recommended.
- For Mac OS X, TextEdit is recommended.
- For DOS, "edit" is recommended. This is available in the DOS directory.

Step 5. Activation: type the six letters phxlog

If you have a desktop, type "phxlog" on the USB keyboard.

If you have a laptop, type "phxlog" on the **external USB keyboard** (see step 2). **Do not type** on the **internal laptop keyboard**, as nothing will happen.

The password "phxlog" is the default password that is set at the factory.

If you make an error typing in the password sequence, start typing the password from the beginning again.

Do **not** press any keys after the password. Do **not** press the enter key after the password.

Step 6. View the menu

You should now see the menu appear on the screen (see Figure 4 on the next page).

As an aside, the unit generates the menu by typing keystrokes, just like a real keyboard does. While the keystrokes are being displayed, **do not use the mouse to switch focus** away from the text editor.

- 1) In order to view the contents of the memory, press the number “1” key (above the “q” key).
 - Use the numbers above the letters “qwerty” on the keyboard, on the left hand side. Do **not** use the numbers on the number pad on the right hand side of the keyboard.
- 2) The recorded keystrokes will be displayed on the screen.
 - While the keystrokes are being displayed, **do not use the mouse to switch focus** away from the text editor. The unit is actually sending keystrokes from the keyboard straight into the editor, if you switch focus to another program, inappropriate keystrokes will be sent into the program.
 - To stop the download, normally it is possible to press the “escape” key. If this fails, it is safe to unplug the unit from the USB port of the computer to stop the download.
- 3) After you have finished viewing the contents of the memory, you may wish to erase the contents of the memory. This is done by pressing the “3” key (above the “e” key). The menu will be re-displayed when the memory has been fully erased.
- 4) After you have erased the contents of the memory, press any key to exit the menu. The KeyCarbon™ will display “Record mode.” on the screen to indicate that you have exited the menu. Any key other than the numbers 0 to 9 will also exit the menu.

You have now learned most of the things that you will need to know in order to use the KeyCarbon™. Read on to learn about the other options.

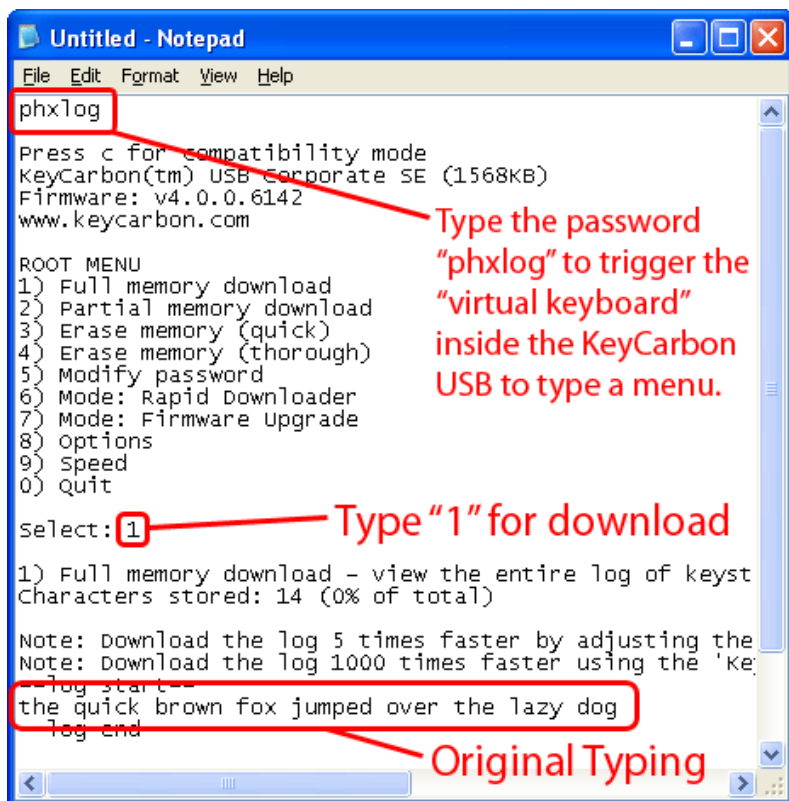


Figure 4 - KeyCarbon™ USB menu.

The following menu options are available from the KeyCarbon USB device:

1. Full Memory Download

When you select the 'Full Memory Download' option, the KeyCarbon™ will begin sending the memory contents to the screen. When the entire memory has been displayed, the menu will be sent to the screen. Pressing any key will abort the download process.

2. Partial Memory Download

When you select the ‘Partial Memory Download’ option, the KeyCarbon™ will first ask which point in the log to begin sending from. It will then begin sending the memory contents to the screen.

3. Erase Memory (quick)

When you select the ‘Erase Memory (quick)’ option, the KeyCarbon™ will perform a quick erase of the log contents. Note that unlike the menu option “Erase Memory (thorough)”, it would still be possible in theory to recover the contents of the memory with a flash chip reader.

4. Erase Memory (thorough)

When you select the “Erase Memory (thorough)” option, each sector in the flash is overwritten multiple times. This option is useful if it becomes absolutely necessary to delete the contents of the log, with no possibility of retrieval.

5. Modify Password

The default password set at the factory is **phxlog**. It is highly recommended that the password be changed from the default setting. There are a couple of points about the password that are *very important*.

Review and understand this section *before you change the password*.

- 1) Select a unique password.
- 2) Do not use a password or subset of a password that you are using elsewhere on your system.
- 3) The password should not be a string of characters that would be typed in normal usage. Examples of poor password choices would include “father”, “avenue” or your pet’s name. Here are some good password choices: “tabthett”, “ddfrhome”, and “ddghurdd”. A password should be a consecutive set of

characters that would never be typed, except by someone who knew the password.

- 4) The password must consist of the letters A-Z.
- 5) Passwords are not case sensitive.
- 6) The KeyCarbon will prompt you to enter the password, and then re-enter the password.
- 7) If the password is forgotten or lost, the device must be returned to the factory for a reformat. It is recommended that the password be written down in the event that it is forgotten.
- 8) The password has a maximum length of 17 characters.
- 9) The number of combinations for the password is 26^{17} or 1,133,827,315,385,150,725,554,176. It is virtually impossible that anyone else could guess your password before the end of the universe, given that it takes at least a second to try each password.

6. Diagnostics

Displays diagnostics information about the device, including the percentage of the device used, encryption status, date/time (for Forensic units) and more.

7. Firmware Upgrade Mode

Note: do not upgrade the firmware in your device unless the device is not performing its job. Upgrading the firmware is designed only for emergencies when the product is not compatible with an as-yet-unreleased model of USB keyboard.

Used to upgrade the firmware in the device. Firmware upgrades can add additional features, such as encryption of the data inside the device, and a larger memory size.

To download the KeyCarbon™ Windows Toolkit utility used to upgrade the firmware inside the device, browse to:

http://www.keycarbon.com/products/keycarbon_usb/software/

See chapter 6 for more information.

8. Options - Language

The language that the menu is displayed can be changed.

If you wish to support for additional languages to the device, such as French, German, Japanese or Arabic, email support@KeyCarbon.com.

8. Options - Date/Time

This section is applicable to the KeyCarbon™ USB Forensic model (KCU405) only.

Use this menu to alter the date and time for the time stamping of the log.

The date/time stamps in the log are inserted every 60 seconds.

The date/time in the unit is automatically set whenever a firmware upgrade takes place.

The date/time in the unit can be synchronized with the PC clock, using the KeyCarbon™ USB Rapid Downloader". Use the menu "Tools..Synchronize Forensic Clock to Computer Clock"; see chapter 4.

9. Speed

Certain older computers will not work properly if the menu is generated at extremely high speed. If the menu exhibits the occasional incorrect character, use the "Speed" menu option to slow the menu operation down.

Most modern computers will easily handle menu generation at the fastest speed.

If you are using a Macintosh the fastest menu speed you can use is setting 5.

If you have Windows XP, the “KeyCarbon USB Rapid Downloader Utility” is recommended. This Windows utility downloads the log at 100x the speed of this editor based method. See chapter 4 for more details, or browse to

http://www.keycarbon.com/products/keycarbon_usb/software/

0. Quit

When you are finished with all KeyCarbon™ activities, be sure to choose the ‘Quit’ option from the menu.

5. Retrieving keystrokes using a Windows® utility

Note: this method is NOT recommended as a first try, as it is less compatible than the method described in the previous chapter. Try the method described in the previous chapter first.

Note: this is the one of two separate methods to retrieve the log; for the “Virtual Keyboard” method, see the previous chapter.

The log of keystrokes can be downloaded using a Windows® utility, namely the “KeyCarbon™ USB Rapid Downloader”. See the screenshot in figure 2, below.

The latest version of the “KeyCarbon™ USB Rapid Downloader” is available from:

http://www.keycarbon.com/products/keycarbon_usb/software/

The “KeyCarbon™ USB Rapid Downloader” is compatible with Windows® 2000/XP. Version 5 and below are not compatible with Vista, in this case, use the “Virtual Keyboard” method in chapter 5 below. This utility is recommended - the log downloads very quickly compared to the traditional method of scrolling keystrokes into an editor; there are more features such as log filtering and firmware upgrading.

- 5) Unplug the keyboard from the unit, and plug the unit into the USB port of either a desktop or a laptop.
 - The retrieval may work better if the unit is plugged into the laptop or PC, without plugging the keyboard into the unit.
- 6) Install the software, by browsing to:
http://www.keycarbon.com/products/keycarbon_usb/software/
- 7) Run the software, by selecting “Start..All Programs.. KeyCarbon USB Windows Toolkit..KeyCarbon USB Rapid Downloader”
- 8) In the software, select “Tools..Import Log”. The log file will be downloaded from the KeyCarbon USB.

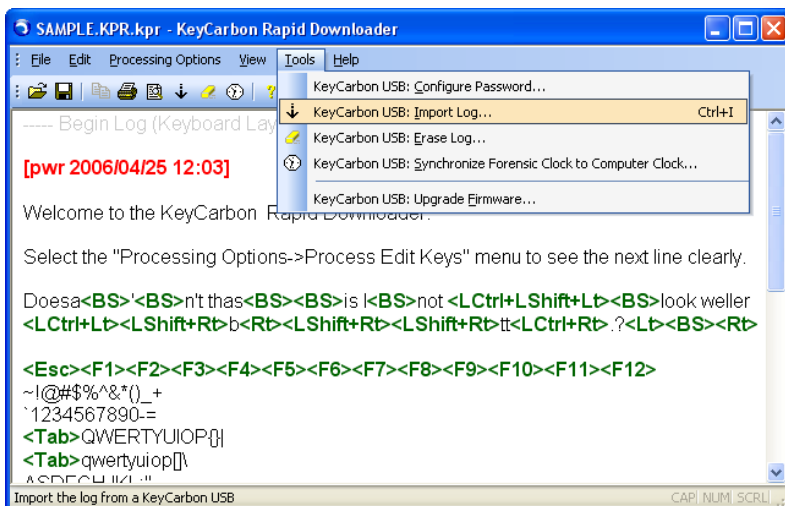


Figure 2 - KeyCarbon™ USB Rapid Downloader utility.

- 9) You can view the log file in a variety of languages, as shown in figure 3 below.

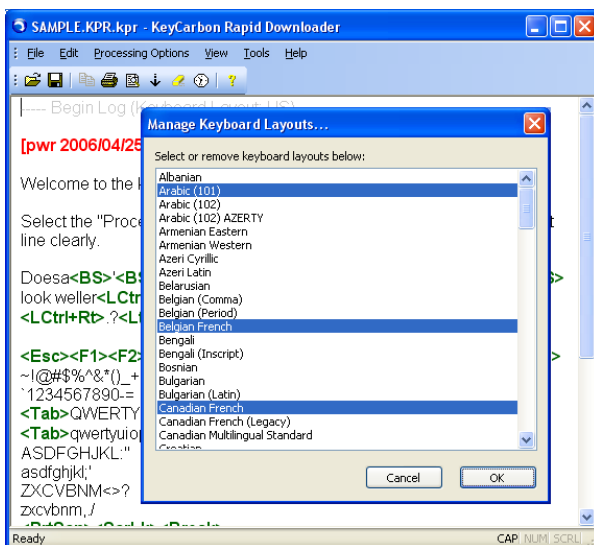


Figure 3 - KeyCarbon™ USB Rapid Downloader - languages.

Once the log has been downloaded, it can be displayed in a variety of keyboard layouts, including: Albanian, Arabic, Armenian Azeri, Belarusian, Belgian, Bengali, Bosnian, Bulgarian, Canadian French, Croatian, Czech, Danish, Divehi Phonetic, Divehi Typewriter, Dutch, Estonian, Faeroese, Farsi, Finnish, French, Gaelic, Georgian, German, Greek, Gujarati, Hebrew, Hindi, Hungarian, Hungarian 101-key, Icelandic, Irish, Italian, Kannada, Kazakh, Latin American, Latvian, Lithuanian, Malayalam, Maltese, Maori, Marathi, Mongolian Cyrillic, Norwegian, Polish, Portuguese, Punjabi, Romanian, Russian, Sami Extended Finland-Sweden, Sami Extended Norway, Serbian Slovak, Slovenian, Spanish, Swiss French, Swiss German, Syriac, Tamil, Tatar, Telugu, Thai, Turkish, Ukrainian, United Kingdom, United States-Dvorak, United States-International, US, and Vietnamese.

6. Firmware Upgrade

The KeyCarbon™ USB is completely firmware upgradeable with a download from the internet.

See http://www.keycarbon.com/products/keycarbon_usb/firmware/ for instructions, and the Windows® utility to perform the firmware upgrade.

If you experience any compatibility problems with your KeyCarbon™, email support@KeyCarbon.com. Most problems can be resolved within 1-5 business days.

USER AGREEMENT

This Agreement is between DesignREM, Inc. ("DesignREM") and you, the user or installer of the KeyCarbon keystroke recording device (the "Device"). Your installation or use of the Device indicates your consent to all of the terms of this Agreement. If you do not agree to any term of this Agreement, do not install the Device. Return the bag unopened to the place of purchase for full refund.

PERMISSIBLE USES

The Device was designed and is to be used solely for parents to monitor what their children are doing on the computer and for businesses to monitor what their employees are doing on the computer (the "Permissible Uses").

IMPERMISSIBLE USES

The Device may not be used to violate the privacy rights of others, or to access or intercept electronic communications in violation of wiretap statutes, or to violate company regulations ("Impermissible Uses"). Impermissible Uses include, but are not limited to the following acts: retrieval of credit card information, passwords, personal and/or medical information, confidential and/or proprietary information, or trade secrets.

Privacy and wiretapping laws change from time to time and vary from state to state. It is your responsibility to ensure that you are in compliance with federal, state, and local laws.

MUST POST NOTICE of MONITORING

If anyone other than you will be using the computer on which the Device is installed, you agree to post a notice visible to each user of the computer to the effect that (i) activities on this system may be monitored and recorded and (ii) that anyone using this system expressly consents to such monitoring and is advised that if such monitoring reveals possible evidence of unauthorized or criminal activity, such evidence may be provided to company or law enforcement officials.

SERIAL NUMBER FOR INVESTIGATING ILLEGAL ACTS

A unique serial number may be electronically stored in the Device to aid company and law enforcement officials in the investigation of any unauthorized or illegal acts that may be committed with the Device. You agree to permit DesignREM to assist these officials by providing serial number and sales information as necessary in the course of the investigation. DesignREM may request the assistance of its distributors and customers in providing information relating to the serial numbers of such Device(s), and you agree to cooperate with such requests.

LICENSE

The Device contains software and firmware instructions (the "Program") on the internal microcontroller. The Device and Program are protected by copyright and other intellectual property laws.

DesignREM hereby grants you the right to:

a) use the Program for the Permissible Uses in the United States for as long as you own the Device.

b) view, copy, print and distribute copies of the information provided by the Device provided

(1) the information is used for informational purposes only; and

(2) any copy of the information (or portion thereof) includes the following copyright notice: (c)2000-2006, DesignREM, Inc. All Rights Reserved.

This license is limited to the rights above. Therefore, you are expressly prohibited from taking any other action with the Device, including but not limited to:

a) modify, reverse engineer, de-compile or disassemble the Device or the Program;

- b) make any attempts to defeat the code protection which is in place on the internal microcontroller;
- c) make any attempts to read or copy the Program;
- d) attempt to open the casing around the Device;
- e) rent, lease, lend, or sublicense the Device to others;
- f) transfer your rights to another, unless the recipient agrees to the terms of the Agreement.

LIMITED WARRANTY

DesignREM warrants that the Device, if provided by DesignREM, is free from defects in material and workmanship for 12 months from the date of original purchase of the Device, provided the Device was not subject to accident, abuse, or improper use.

THIS IS A LIMITED WARRANTY AND ALL OTHER WARRANTIES ARE EXPRESSLY DISCLAIMED, INCLUDING BUT NOT LIMITED TO WARRANTIES OF TITLE, NON-INFRINGEMENT OR IMPLIED WARRANTIES OF MERCHANTABILITY OR FITNESS FOR A PARTICULAR PURPOSE. DesignREM'S SOLE LIABILITY FOR ANY BREACH OF THIS WARRANTY SHALL BE, IN DesignREM'S SOLE DISCRETION: (i) TO REPAIR OR REPLACE YOUR DEVICE.

DesignREM will honor this warranty only if you inform DesignREM of your problem with the Device during the applicable warranty period and promptly provide evidence of the date the Device was originally purchased. This warranty is void if you violate the terms of this Agreement.

To invoke the warranty, complete the warranty form found in the back of the Operating Guide or at www.KeyCarbon.com. Send the completed warranty form, the defective device, and a copy of the purchase receipt or other evidence of the purchase date to: Allen Concepts Inc., 1900 W. Chandler Blvd., Suite 15-264, Chandler, AZ 85224. Include your name, address, and telephone number. Allen Concepts Inc., on behalf of DesignREM, will repair or replace the device

and return it to you. If the device is working properly and the password stored inside the Device does not match the password provided on the Warranty Form, you will be charged \$40 for resetting the password. The Device will be returned to you along with the new password, and an empty log.

FORGOTTEN PASSWORD

If you have forgotten your password, send the Device to: ACI, 1900 W. Chandler Blvd., Suite 15-264, Chandler, AZ 85224. Include your name, address, and telephone number. ACI will reset your password and charge you \$40 for this service. The Device will be returned to you along with the new password. Users should be aware that resetting the password also clears the log.

INDEMNIFICATION

You agree to defend, indemnify, save and hold DesignREM harmless from any and all claims, demands, liabilities, costs or expenses including direct, indirect, incidental or consequential damages and reasonable attorney's fees resulting from the Device, including loss of business or profit.

LIMITATION OF LIABILITY

UNDER NO CIRCUMSTANCES AND UNDER NO LEGAL THEORY, WHETHER TORT, CONTRACT, OR OTHERWISE, SHALL DesignREM OR ITS SUPPLIERS OR RESELLERS BE LIABLE TO YOU OR ANY OTHER PERSON FOR ANY INDIRECT, SPECIAL, INCIDENTAL, OR CONSEQUENTIAL DAMAGES OF ANY CHARACTER INCLUDING, WITHOUT LIMITATION, DAMAGES FOR VIOLATION OF THE RIGHT TO PRIVACY, VIOLATION OF WIRETAPPING STATUTES, LOSS OF GOODWILL, WORK STOPPAGE, COMPUTER FAILURE OR MALFUNCTION, OR ANY AND ALL OTHER COMMERCIAL DAMAGES OR LOSSES. IN NO EVENT WILL DesignREM BE LIABLE FOR ANY DAMAGES IN EXCESS OF THE PURCHASE PRICE, EVEN IF DesignREM SHALL HAVE BEEN INFORMED OF THE POSSIBILITY OF SUCH DAMAGES, OR FOR ANY CLAIM BY ANY THIRD PARTY.

EXPORT CONTROLS

You may not export or re-export the Device or the Program (i) into (or to a national or resident of) Cuba, Iraq, Libya, Sudan, North Korea, Iran, Syria or any other country to which the U.S. has embargoed goods; or (ii) to anyone on the U.S. Treasury Department's list of Specially Designated Nationals or the U.S. Commerce Department's Table of Denial Orders.

GOVERNING LAW

This Agreement shall be governed in all respects by the laws of New Zealand, except for conflict of laws provisions. The parties agree that for any dispute, controversy or claim arising out of or in connection with this Agreement, venue and personal jurisdiction shall be in a court with competent jurisdiction located in New Zealand.

SEVERABILITY

The provisions of this Agreement will be deemed severable, and the invalidity or unenforceability of any provision will not affect the validity or enforceability of another provision hereof.

ENTIRE AGREEMENT

This Agreement constitutes the entire agreement and understanding between the parties and may be amended only by a writing executed by both parties.

All Materials are the property of DesignREM, Ltd. Copyright 2004 - 2007 DesignREM, Ltd. All Rights Reserved.